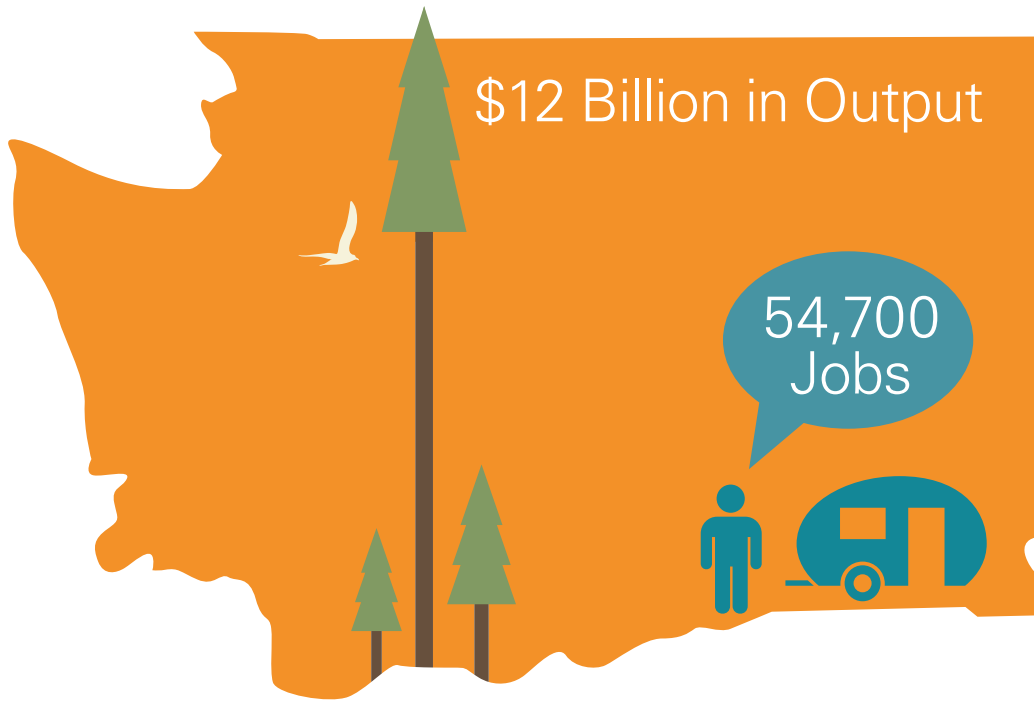


Direct Impact of Health Care Innovation Sub-Sector

The Health Care Innovation Sub-Sector contributes directly to Washington's economy.



Source: 2015 Report on Health Care Innovation in Washington State



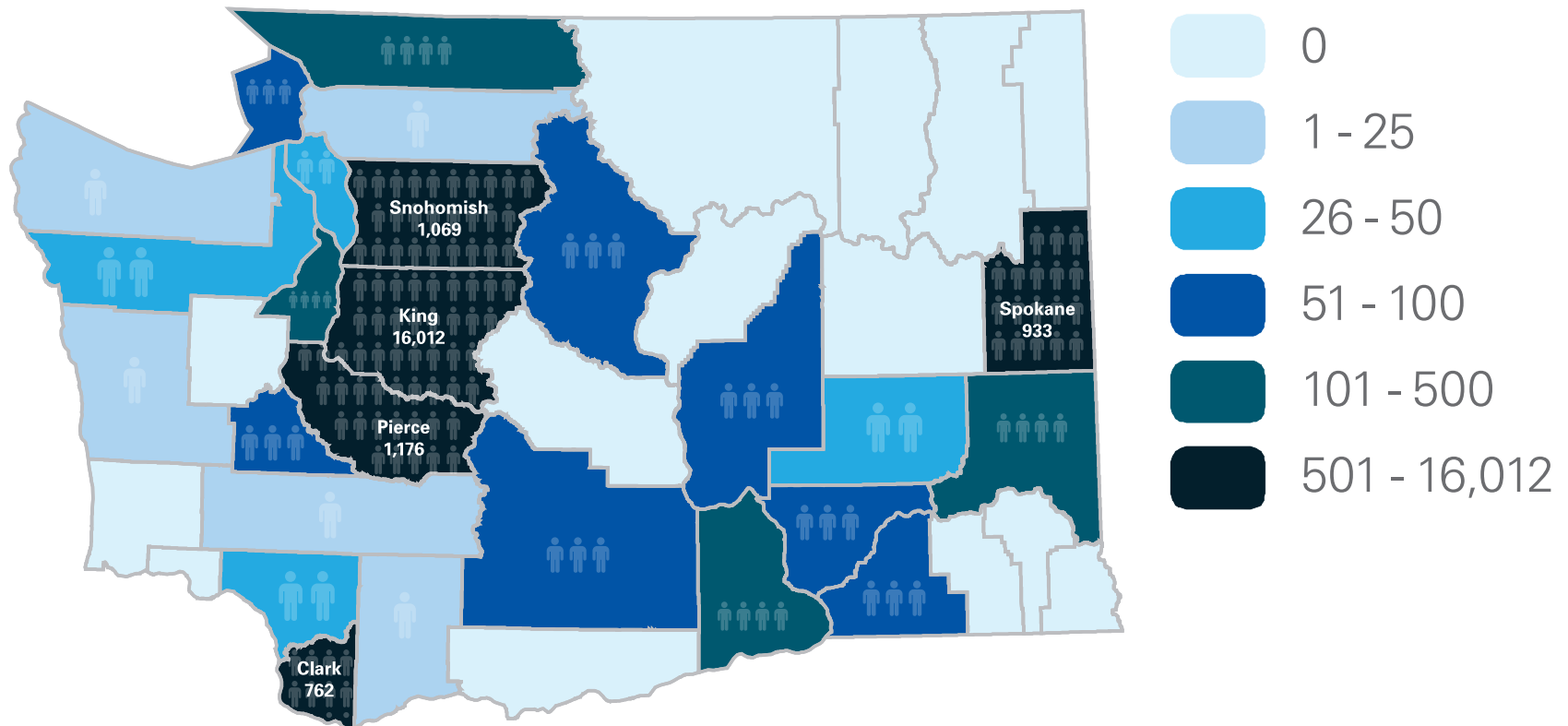
Total Economic Impact of Health Care Innovation Sub-Sector

The Health Care Innovation Sub-Sector's total economic contributions equal \$12B in output and 54,700 jobs.

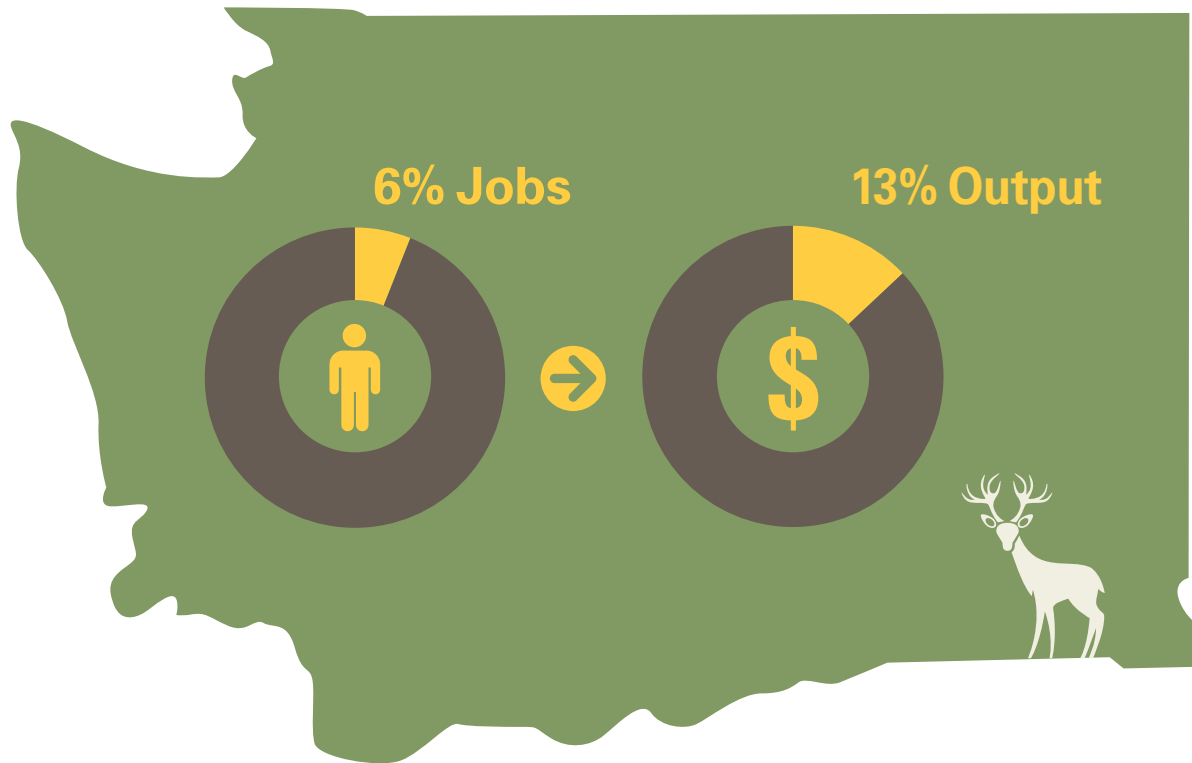
(Direct, indirect and induced)

Source: 2015 Report on Health Care Innovation in Washington State

The Health Care Innovation Sub-Sector generates 22,500 direct jobs—it supports urban and rural jobs with employees in 25 of the 39 counties in Washington state.

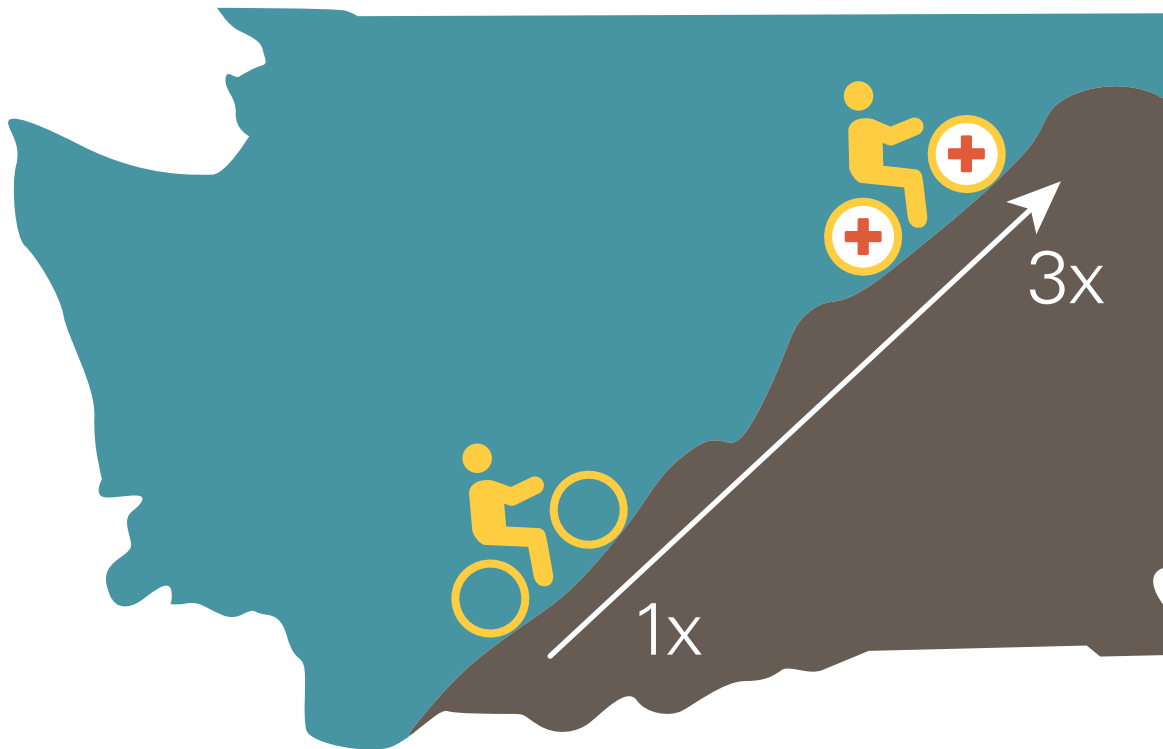


Source: 2015 Report on Health Care Innovation in Washington State



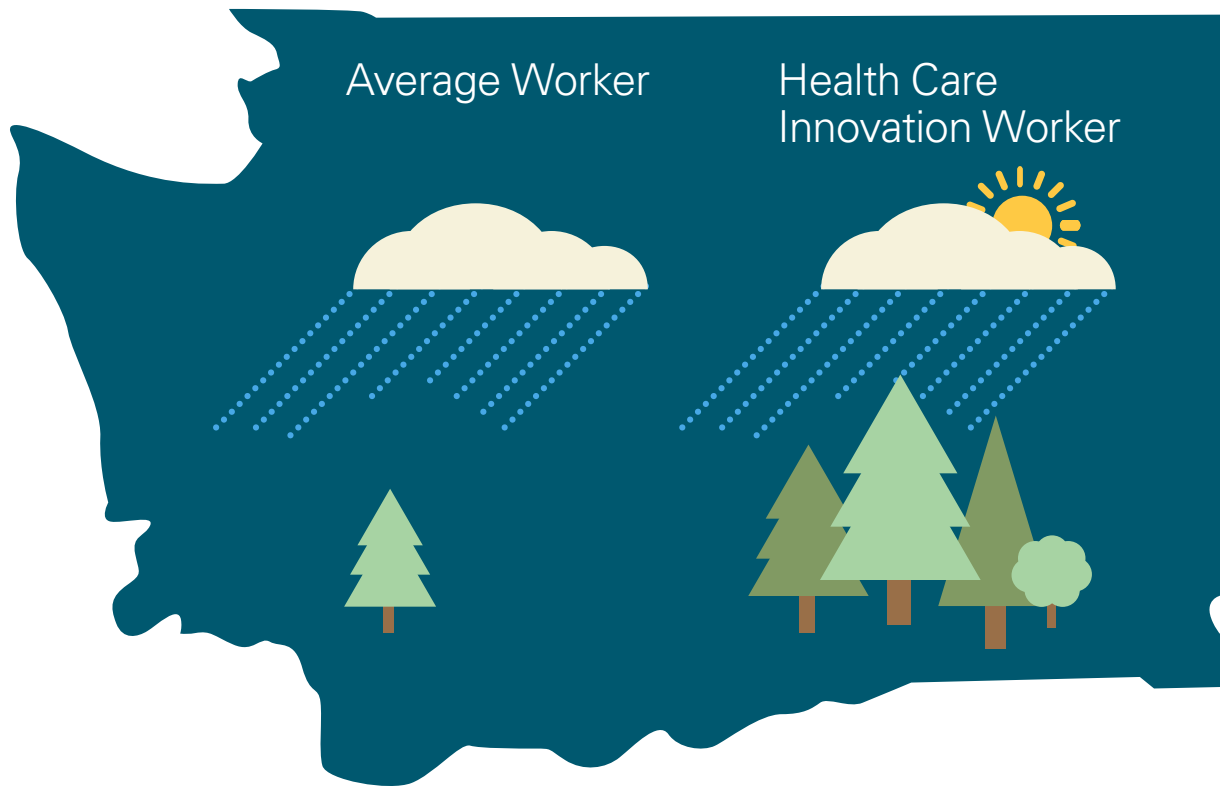
The Health Care Innovation Sub-Sector in Washington state comprises 6% of health care jobs and produces 13% of the health care economy's output.

Source: 2015 Report on Health Care Innovation in Washington State



On average, Health Care Innovation Sub-Sector workers earn 8% more than the average worker in Washington state and produce 300% more.

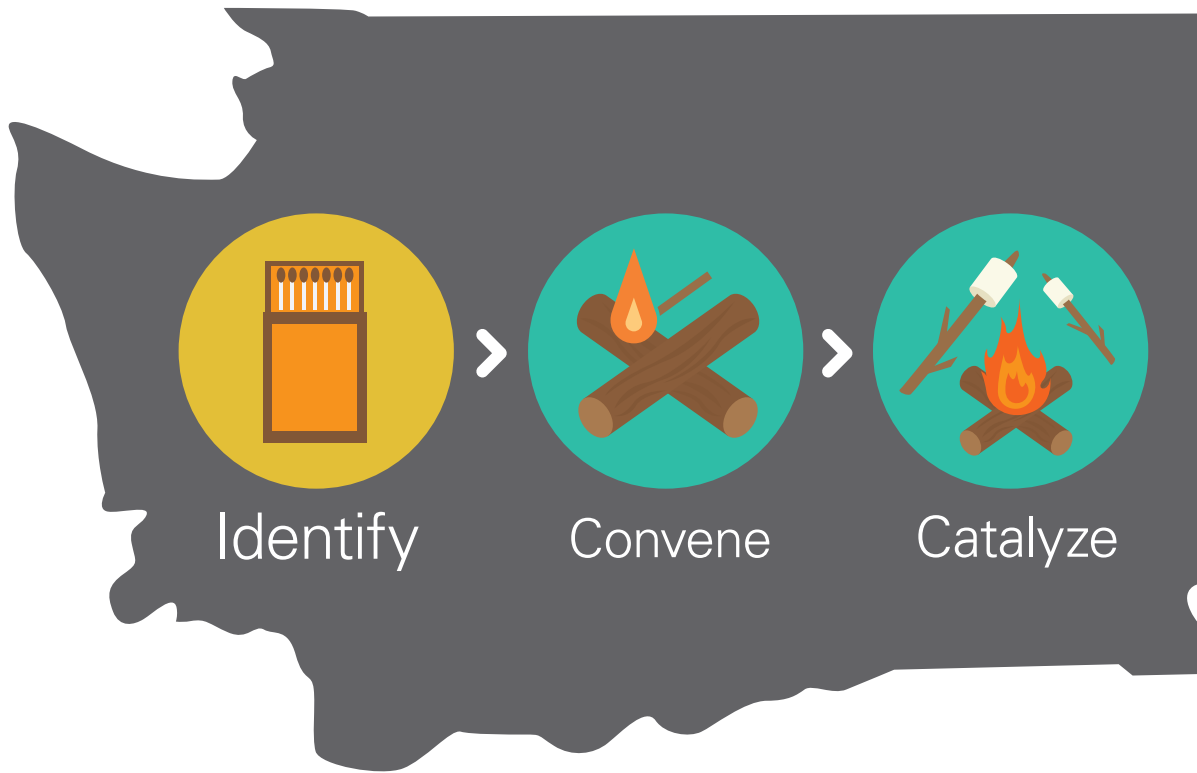
Source: 2015 Report on Health Care Innovation in Washington State



Health Care Innovation Sub-Sector workers make significant contributions to the state economy, generating \$3.42 worth of output for every \$1 of income.

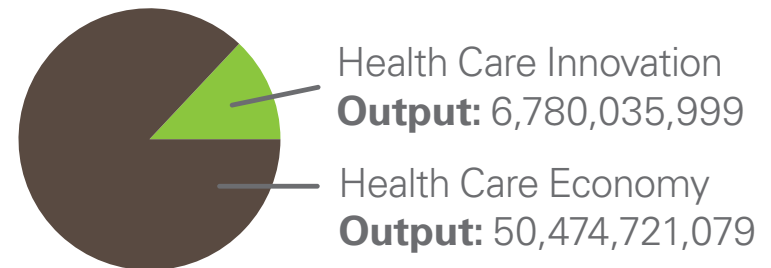
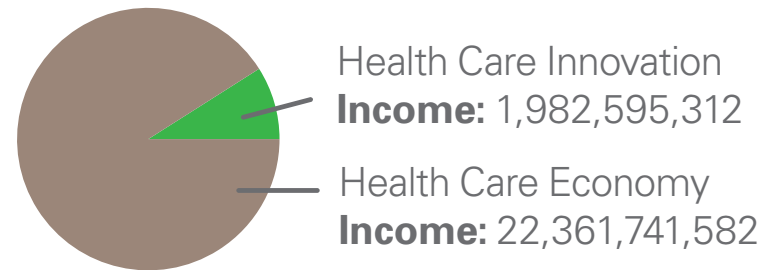
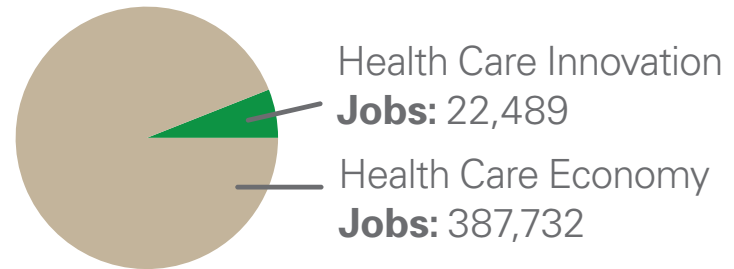
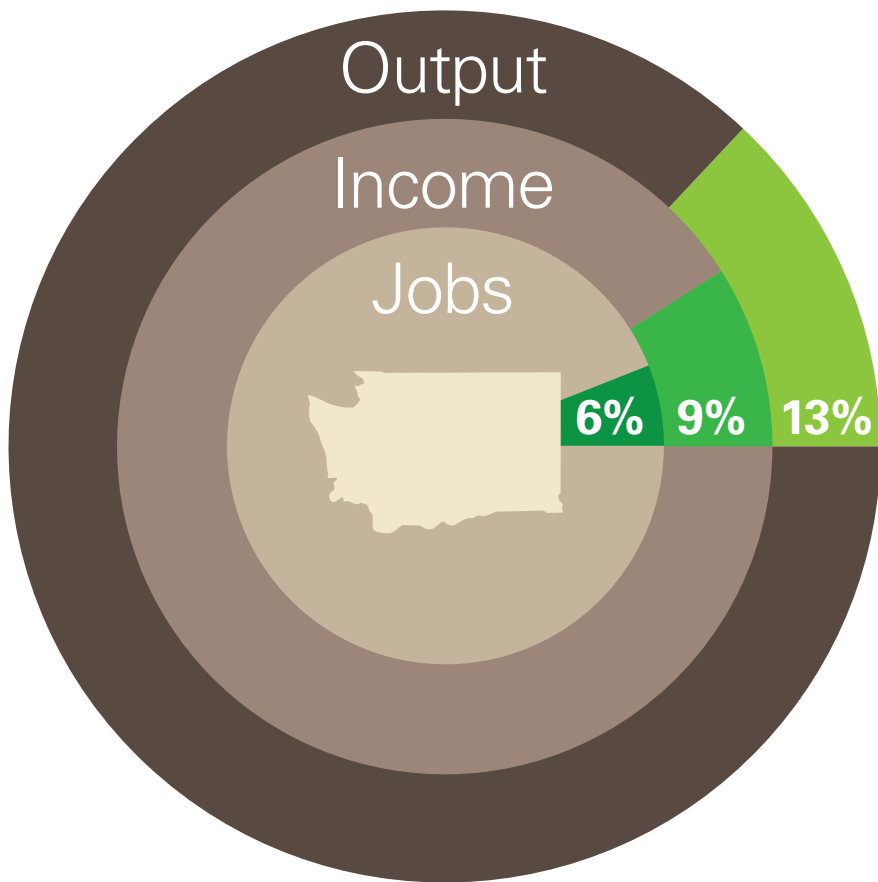
(Health Care Innovation workers generate nearly 3x the output of the average worker.)

Source: 2015 Report on Health Care Innovation in Washington State

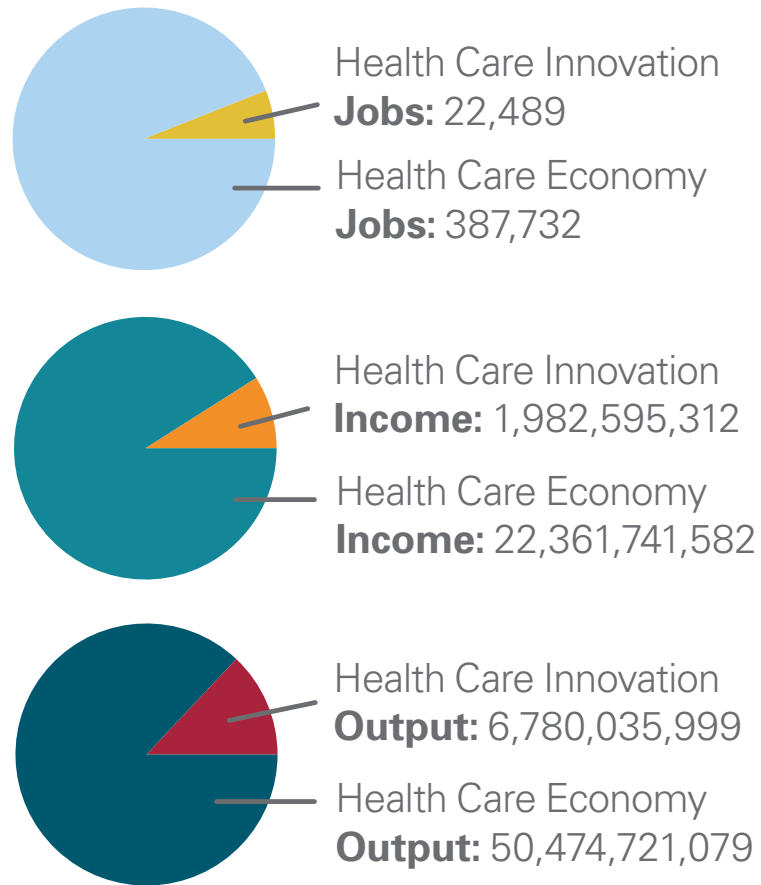
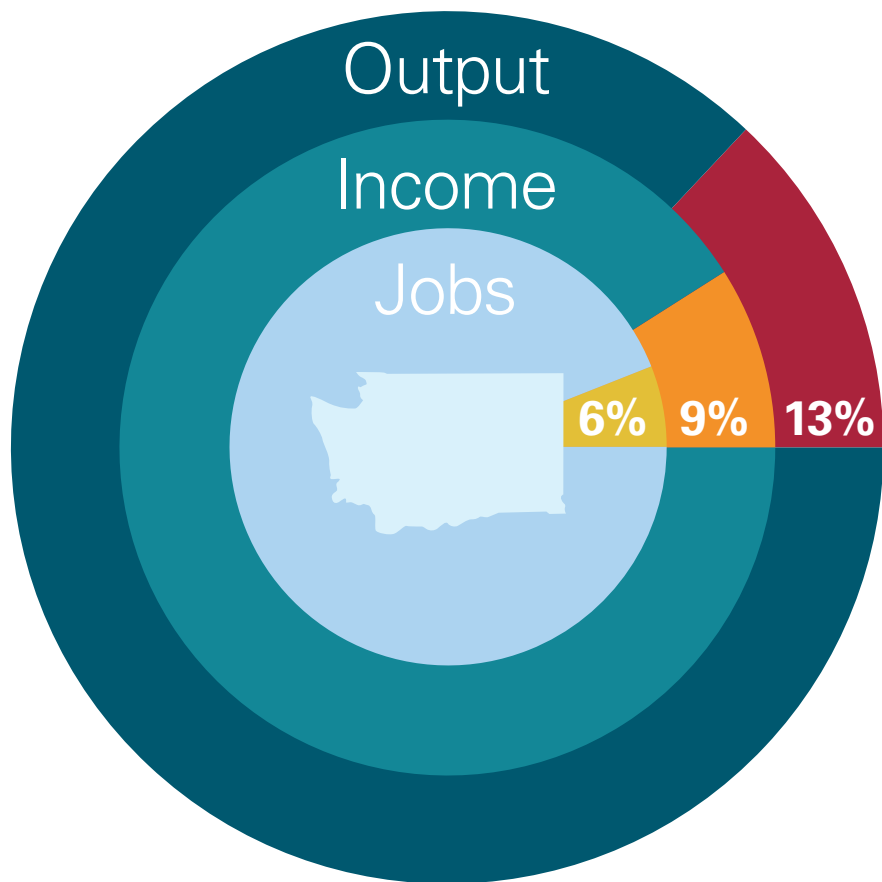


Health care is a known driver for growth in Washington, but we've identified a catalyst: The Health Care Innovation Sub-Sector.

Source: 2015 Report on Health Care Innovation in Washington State



Source: 2015 Report on Health Care Innovation in Washington State



Source: 2015 Report on Health Care Innovation in Washington State